



BENEFIT SUMMARY

WHO WE ARE

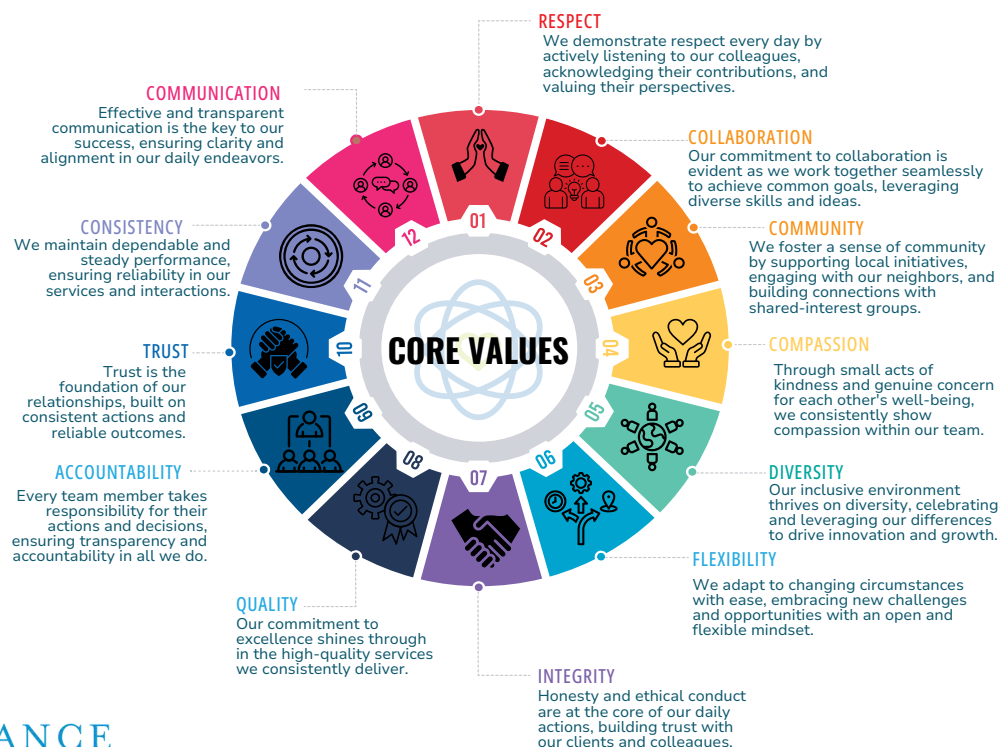
Granville Vance Public Health is a rural academic health department serving Granville and Vance counties. GVPH employs approximately 90 staff across the two counties and is still providing the core public health services along with several other programs that are important to the community, including Primary Care, Care Management for Children and Pregnant Women, Dental, Minority Diabetes Prevention, CenteringPregnancy(R), and Opioid Use Disorder programs such as Medication Assisted Treatment (MAT) and Naloxone.

VISION, MISSION & VALUES

Vision. Inspiring a culture of health by improving your environment, your community, and your health.

Mission. To protect and promote health in Granville and Vance Counties.

GVPH CORE VALUES



For more questions or information, please contact Granville Vance Public Health Human Resources:

919.690.2102



humanresources@gvph.org



www.gvph.org



PAID EMPLOYEE BENEFITS

Retirement: Local Government Employee's Retirement System through the North Carolina Department of State Treasurer; www.myncretirement.com.

Employees contributes 6% of salary per month and County contributes 19.52%

Health Insurance: Health Insurance with the State Health Plan effective first of the month following thirty day of employment.

LEAVE & HOLIDAYS

PAID LEAVE

Thirteen paid holidays Per the North Carolina holiday schedule.

Employee Birthday: Birthdate or day during birth month

SICK LEAVE

Full-time employees earn 7.5hours of sick leave each month, in addition to annual leave.

PAID PARENTAL LEAVE

GVPH will provide eligible employees working 80% or more of the regularly scheduled workdays with a maximum of six (6) weeks of Paid Parental Leave (PPL) following the birth of an employee's child or the placement of a child with an employee in connection with adoption or foster care.

VOLUNTEER LEAVE

Full Time employees, and Part Time employees working 80% or more of the standard work hours, are eligible for volunteer leave for the purpose of honoring community involvement during the regular workday.

ANNUAL LEAVE

Years of Service	Hours Earned Monthly
Less than 2 years	7.5 hours
2 Years	8.75 hours
5 Years	10.75 hours
10 Years	12.50 hours
15 Years	14.50 hours
20 Years	16.25 hours

VOLUNTARY BENEFITS

Granville Vance Public Health offers a variety of voluntary benefits for employees. For additional information, please contact Human Resources.

- MetLife Dental Insurance
- SuperiorVision Vision Insurance
- Flexible Spending Account
- Prudential 401(k) pre-tax and ROTH options
- Prudential 457(b) pre-tax and ROTH options
- AFLAC - Short Term Disability, Accident, Hospital, Cancer, etc.
- Colonial - Short Term Disability, Accident, Hospital, Cancer, etc.
- LegalShield
- USABLE - Term Life Insurance



For more questions or information, please contact Granville Vance Public Health Human Resources:

919.690.2102



humanresources@gvph.org



www.gvph.org

